

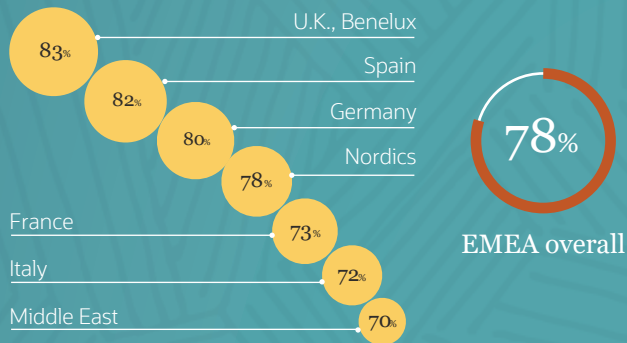
The State of Growth

An EMEA View on Navigating a World in Flux

NetSuite surveyed 2,000 executives from businesses across EMEA to understand how their companies responded to last year's challenges and how that has affected their attitude and appetite for growth.

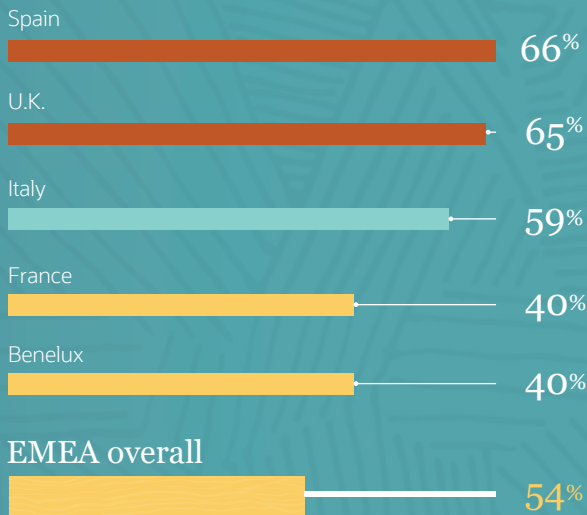
Performance Was Strong Despite Pandemic

More than three quarters of businesses across EMEA reported having met or exceeded growth targets over the past year.



A Positive Outlook Across EMEA

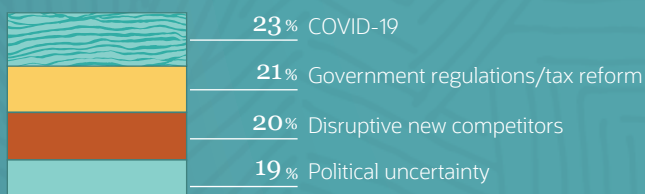
More than half of respondents expect revenue growth in 2021, with confidence highest in Spain and the U.K.



Growth Challenges

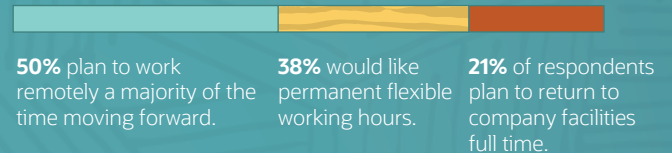
The continued impact of the COVID-19 pandemic is seen as only slightly more threatening than other external challenges businesses face.

Greatest External Threats:



Beginning of the End for the Office?

The pandemic has spurred a shift in attitudes and practice when it comes to how and where employees work.



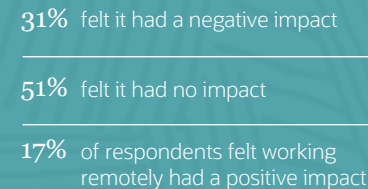
Warming Up to Remote Collaboration

Workers appear to have overcome worries over how working remotely would affect their ability to collaborate with colleagues...



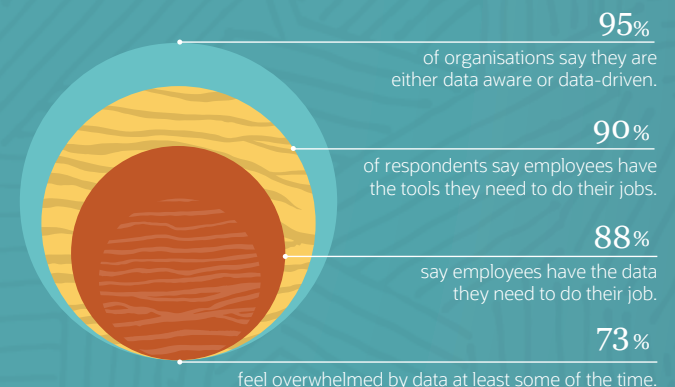
Is "Remote" Working?

...yet more workers saw drawbacks to working remotely than felt it was a positive development.



Data Disconnect

While the overwhelming majority of companies consider themselves data-driven, and are providing the tools and data needed to deliver on that, they are overwhelming their employees in the process.



[Read the Full Report](#)